



ASX Announcement

15 November 2017

3,500m RC Drill Program Commenced

HIGHLIGHTS

- **3,500m RC drill program** commenced at the following prospects;
 - **Thompson Bore (Gold)**
 - Drilling extensions beneath **47m @ 1.3g/t Au**
 - **Henrys Bore (Gold)**
 - First RC test of significant geochemical anomalies
 - **Golden Star (Gold)**
 - Drilling extensions of know mineralisation identified in previous program that included;
 - **12m @ 4.0 g/t Au,**
 - **28m @ 1.0 g/t Au,**
 - **8m @ 2.2 g/t Au,**
 - **12m @ 1.6 g/t Au,**
 - **8m @ 3.5 g/t Au,**
 - **16m @ 1.2 g/t Au**
 - **Lancefield North (Gold)**
 - Drilling southern extensions to Lancefield North mineralisation
 - Testing a number of regional targets
- First assays expected within 4-6 weeks.

Duketon Mining Limited (ASX: DKM) is pleased to announce that **3,500m** of RC drilling across multiple gold prospects has commenced. The drilling is designed to either extend know mineralisation at **Thompson Bore, Golden Star** and **Lancefield North** or test significant anomalies at **Henrys Bore** and Greater **Lancefield North** (See Figure 5).

Thompson Bore (Au)

RC drilling at Thompson Bore in September of this year intersected **47m @ 1.3 g/t Au, including 3m @ 2.6 g/t Au, 8m @ 4.6 g/t Au and 3m @ 3.0 g/t Au** in DKRC0088 (see ASX announcement 6 September 2017). This was drilled beneath a number of historical intersections that show mineralisation commencing at approximately 25m below the surface. These historic holes and DKRC0088 show that mineralisation extends for at least 100 metres down-dip and remains open (see Figure 1).

This program is designed to test the down-dip extents beneath DKRC0088.

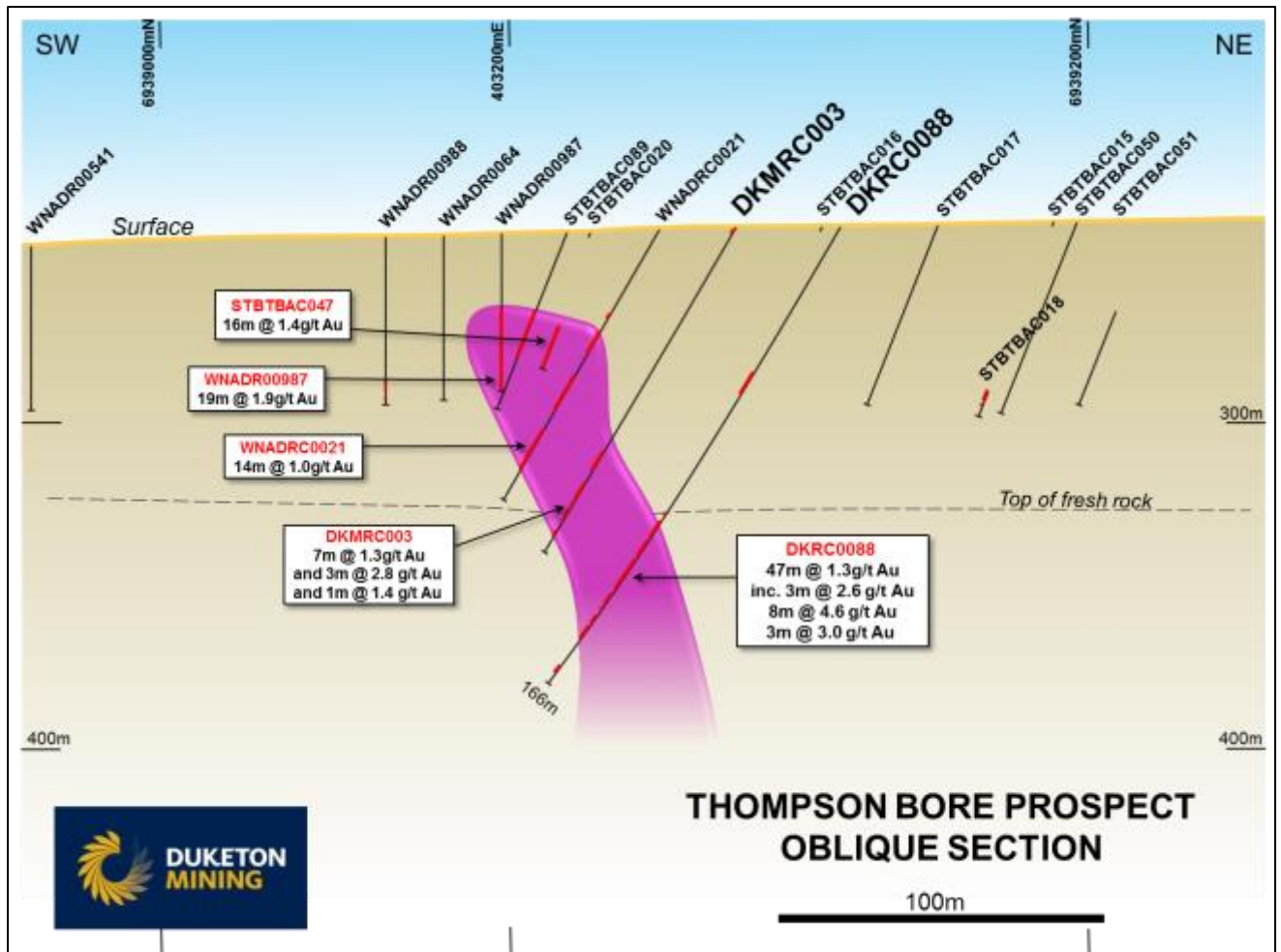


Figure 1. Thompson Bore

Henrys Bore (Au)

The Henrys Bore prospect is located on the eastern edge of a late stage conglomeritic basin. There is significant gold anomalism identified in lag geochemistry samples along approximately 5 kilometres of this basin edge. In areas, these samples average greater than 20ppb gold. There are some historical drill holes in the area, but they are spaced sporadically and in many cases considered to be ineffective (see Figure 2).

This drill program is designed to test beneath a number of anomalous areas identified from a recent reinterpretation of the historical geochemical and drilling data.

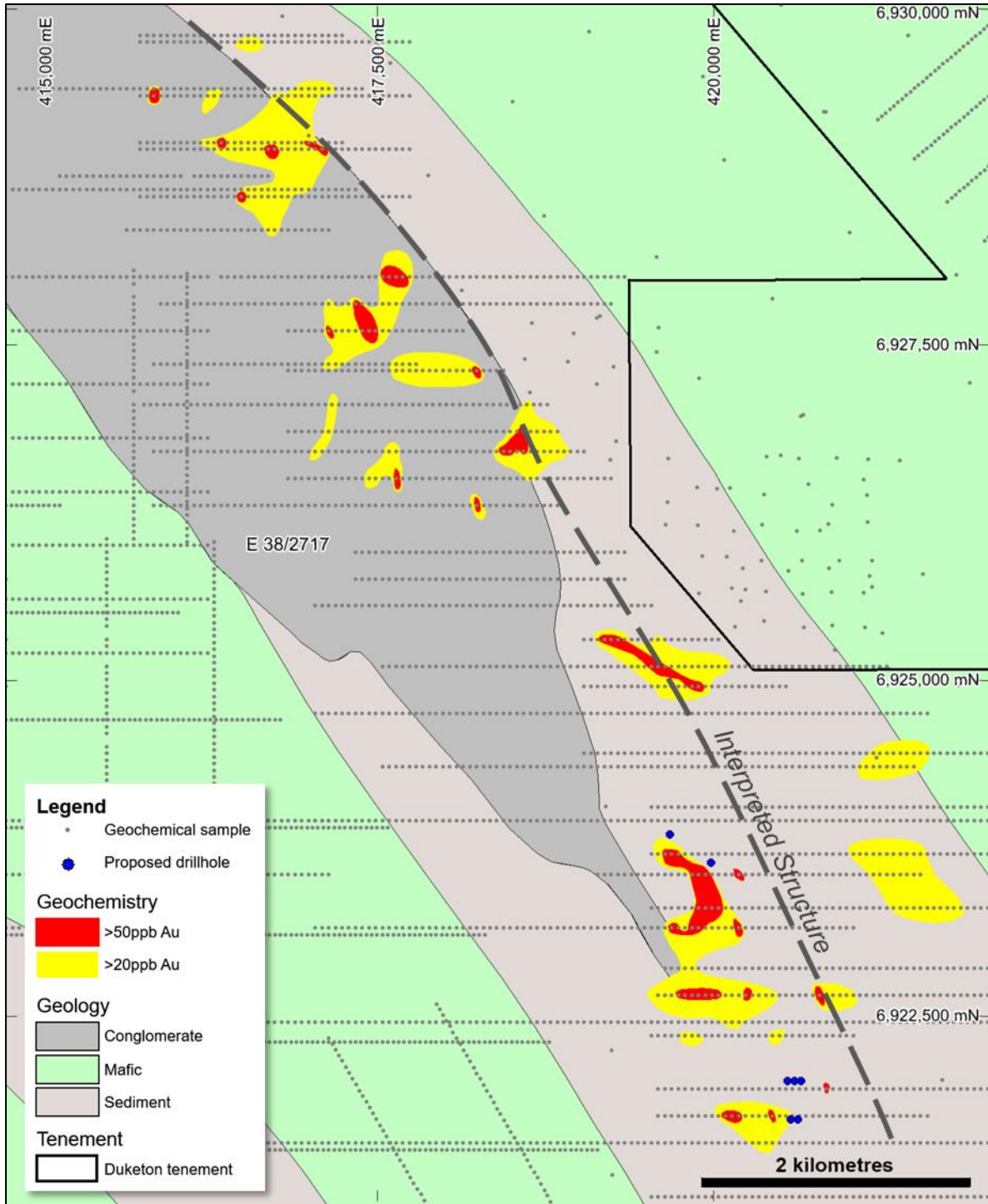


Figure 2: Plan of Henrys Bore Area

Golden Star (Au)

RC drilling at Golden Star in September of this year intersected **12m @ 4.0 g/t Au** including **8m @ 5.9 g/t Au**, **28m @ 1.0 g/t Au** including **4m @ 4.7 g/t Au**, **20m @ 1.1 g/t Au** including **8m @ 2.2 g/t Au**, **12m @ 1.6 g/t Au** including **4m @ 3.1 g/t Au** and **4m @ 1.4 g/t Au**, **8m @ 3.5 g/t Au** including **3m @ 2.8 g/t Au** and **16m @ 1.2 g/t Au** including **4m @ 3.2 g/t Au**. These intersections occur over a strike length of greater than 500m and start at approximately 20m below surface (see Figure 3, Figure 4 and ASX announcement 23 October 2017).

All of these holes were targeting areas along strike and down dip of previous intersections in this area that include (see ASX announcements 15 June 2017 and 28 July 2016):

- **44m @ 1.0 g/t Au**
- **14m @ 2.7 g/t Au**
- **12m @ 1.2 g/t Au**
- **10m @ 1.5 g/t Au**
- **6m @ 2.5 g/t Au**
- **4m @ 7.2 g/t Au**
- **4m @ 2.8 g/t Au**
- **5m @ 2.0 g/t Au**
- **2m @ 5.21 g/t Au**

Mineralisation at Golden Star occurs as multiple sub vertical lenses within a mafic volcanic unit and is associated with quartz veining and sulphide alteration between two strike parallel shear zones. Mineralisation remains open both to the north, south and down dip.

Drilling in this current program is focused on extending this mineralisation laterally and at depth.

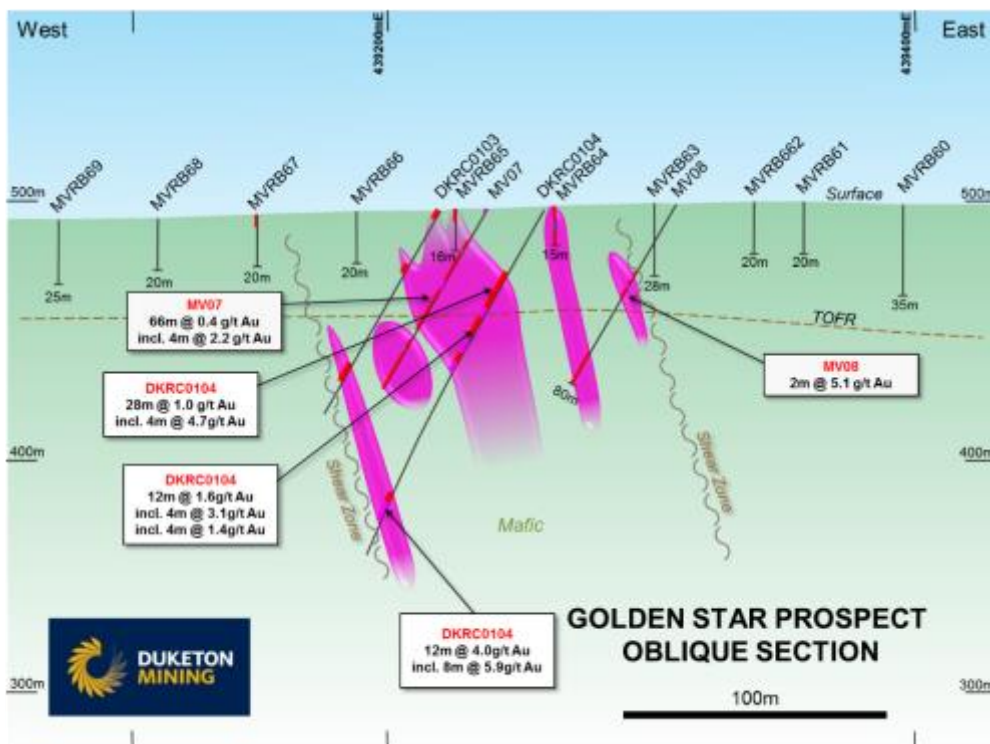


Figure 3: Golden Star Oblique Cross Section

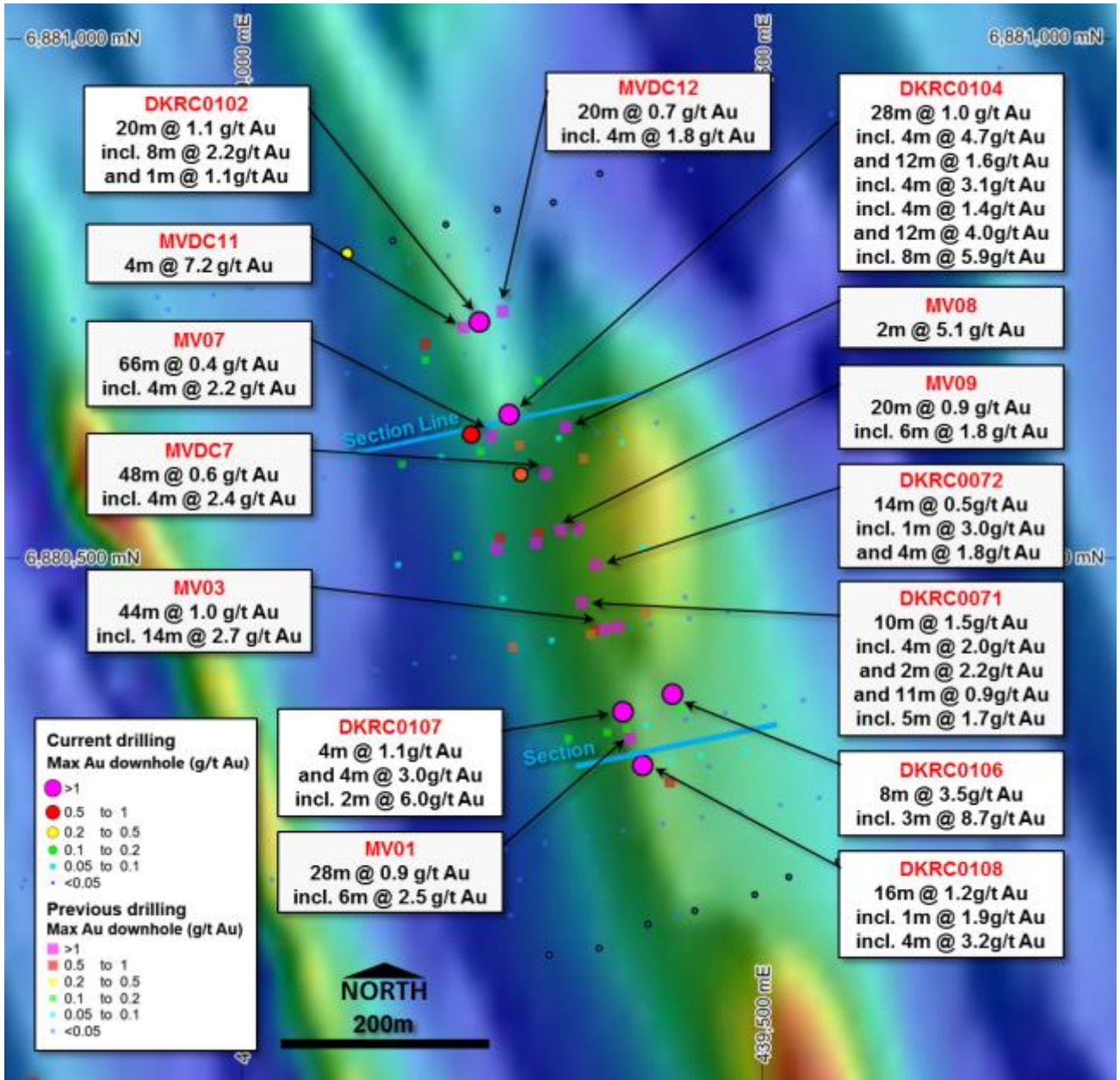


Figure 4. Plan View of Golden Star



Lancefield North (Au)

RC drilling at Lancefield North in September of this year intersected **12m @ 1.9 g/t Au** including **6m @ 3.4 g/t Au**, **11m @ 1.6 g/t Au** including **3m @ 5.2 g/t Au**, **6m @ 1.7 g/t Au** and **7m @ 1.0 g/t Au** including **2m @ 2.8 g/t Au**. (see ASX announcement 18 October 2017).

All of these holes were targeting areas within the constraints of the known mineralisation that include (see ASX announcements 1 & 8 February 2017):

- **16m @ 12.0 g/t Au**
- **14m @ 4.1 g/t Au**
- **23m @ 1.6 g/t Au**
- **11m @ 1.8 g/t Au**
- **9m @ 2.5 g/t Au**

Drilling has identified that mineralisation is continuous within several “stacked” lenses containing higher-grade trends. The mineralisation is open both down plunge and along strike.

Drilling in this current program is planned to extend the Lancefield North mineralisation along strike to the south and also test a number of regional targets beneath anomalism in historical drilling.

For further enquiries, please contact:

Investors:

Stuart Fogarty
Duketon Mining - Managing Director
+61 8 6315 1490

The information in this report that relates to exploration results is based on information compiled by Miss Kirsty Culver, Member of the Australian Institute of Geoscientists (AIG) and an employee of Duketon Mining Limited. Miss Culver has sufficient experience which is relevant to the style of mineralisation and type of deposit under consideration and to the activity that is being undertaken to qualify as a competent person as defined in the JORC Code 2012. Miss Culver consents to the inclusion in the report of the matters based on the information in the form and context in which it appears.

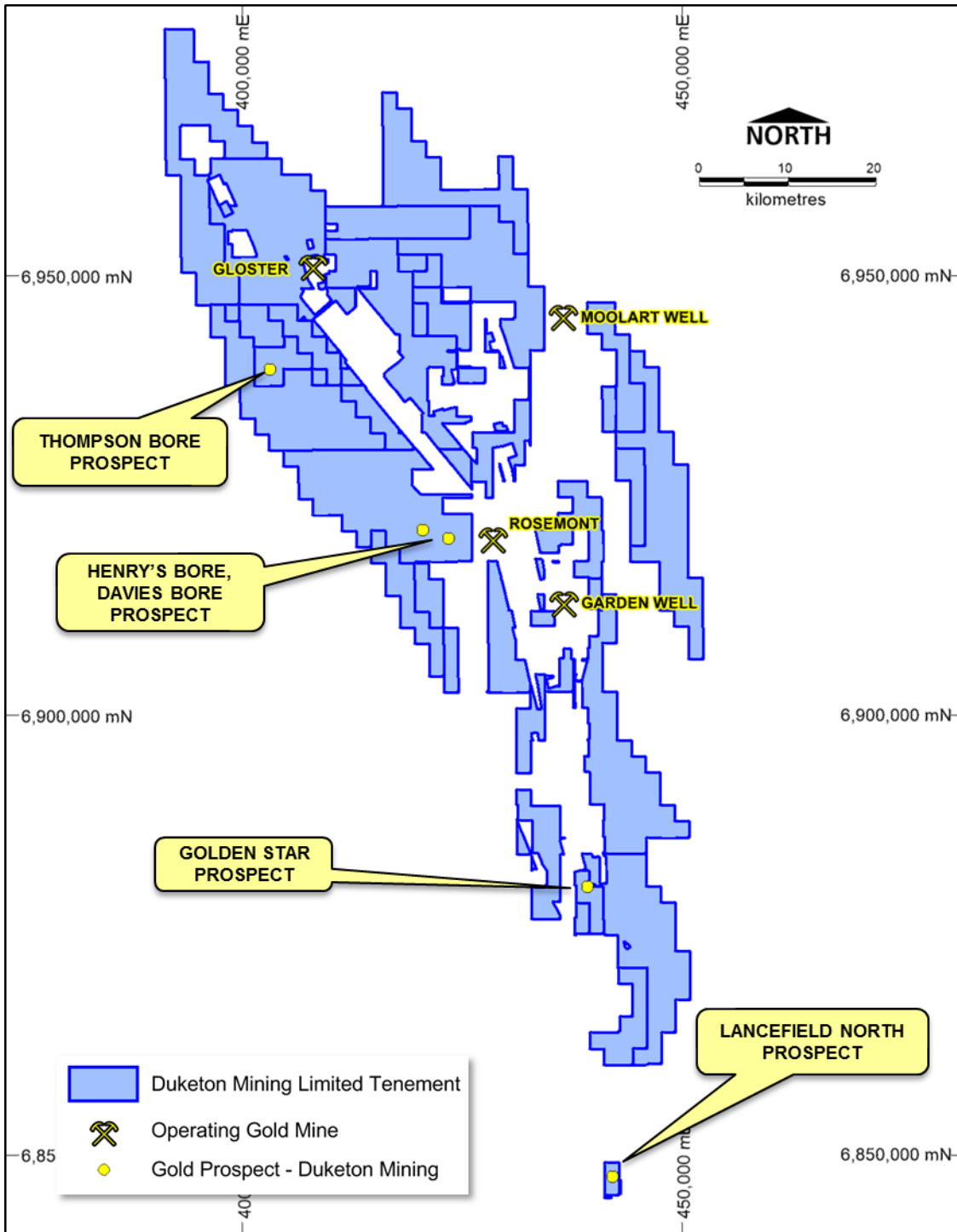


Figure 5: Plan of DKM Tenements